



# The Kapiti Community Foodbank Inc

## *Supporting The Community We Live In*

Newsletter June 2026

### From the desk of the Operations Manager

The Rotary Food Drive was a standout moment this month, with the community rallying together to donate an impressive 335 banana boxes of food. This generosity directly strengthens our ability to support local families/Whānau, and the scale of the response shows how deeply people care about ensuring no one in Kāpiti goes without.

We were pleased to host Paraparaumu College students completing their food and nutrition coursework. Their visit offered hands on learning about food insecurity, nutrition, and community service. Students helped with sorting and packing, asked thoughtful questions, and gained insight into how foodbanks operate and why our work matters.

We also submitted our nomination through Volunteer Kāpiti for the Wellington Airport Regional Community Awards. This recognition highlights the dedication of our volunteers and supporters, and it reflects the collective effort that keeps the Foodbank running. Being part of these awards helps raise awareness of the growing need in our community.

Finally, we met with Emma Haxton from Connected Communities at Kāpiti Coast District Council to explore how the Council can further support our work.

The discussion covered collaboration opportunities, and community outreach. It was a constructive conversation which opens the door to deeper partnership.

### Kapiti Rotary Club Annual Food Drive.

The Kapiti Rotary Foodbank collection was held Saturday May 23rd. Rotary Members manned all the local Supermarkets as well as the Warehouse and Kena Kena Four Square from 9.00am to 4.30pm. The Community responded by dropping food into the trollies which were then packed into boxes and sorted by a team of volunteers at the Coast Church, before being shipped down to the Foodbank containers. Wrapped up against the possibility of a chilly day, some of those Rotarians are approaching ninety but still willing to get out and lend a hand.

Our very grateful thanks to our Staff and to our Volunteers who worked so hard and consistently give of their best on these occasions and without whom we would struggle. The shared camaraderie at lunch and during the sorting was *(continued next page)*



### The Faces of the Organisation



If you've ever wondered how the Kāpiti Community Foodbank runs so smoothly each day, here's your answer — Jane and Ellen, our incredible Operations Assistants.

These two are the quiet powerhouses behind the scenes, making sure every volunteer has what they need to work in their space, every task is organised, and every family who comes through our doors receives the support they deserve. Their passion for ensuring local family/whanau/ have enough food/kai on the table shines through in everything they do. From coordinating donations to keeping our daily operations humming, Jane and Ellen bring heart, dedication, and a whole lot of kindness to our Foodbank. Thank you, ladies! you make a real difference in our community.

The need to use the services of the Foodbank has become a reality for people who have never thought they would be in a position where they are struggling to feed themselves so having empathetic and compassionate people on the front line we have is essential to our organisation.

An individual who needed help recently commented when the Volunteer assisted with loading the food parcel into her car that she was so embarrassed to find herself in this situation. Our Volunteer assured her that these circumstances are not chosen, they choose us and can happen to anyone at any time. Often when people do recover, with the compassion they have received they do give back - often in spades.

**PAK'n SAVE**

OUR POLICY: NZ'S LOWEST FOOD PRICES

**Kapiti Pak'n Save - Consistent Ongoing Financial Supporters of The Kapiti Community Foodbank Inc**



## Board Matters

(A Snapshot of the current work of the Board)

### Chairman's note:

We are the recipients another successful Rotary Food collection and we are once again indebted to the Kapiti Rotary Club for their time and energy and of course the support of our wonderful Local Community.

Whilst we now have re-stocked the containers for the time being. The level of weekly Food donations is a concern going forward into winter

The level of donations have decreased as everyone is struggling to live within their means in this economy. The Foodbank is no different and we will have to manage these lower levels whilst continuing to look after a growing Client list of need in the community together with increasing costs.

We are trying to ensure donations made to the Foodbank are formally acknowledged and formally thanked by email. It is so important to recognise people's efforts and generosity. In the face of global uncertainty, people in the Kapiti community are demonstrating a high level of kindness as we receive food and garden excess.

The Board held a Strategy Business meeting last month to plan the Foodbanks future. We are most fortunate to have such a dedicated board that is working to ensure the future of the Foodbank going forward.

Our Operations Manager Jill has returned from her well-earned holiday where she attend her Daughter's wedding in the UK and enjoyed some travel.

Jane and Ellen professionally managed the Foodbank in her absence. We certainly have a great team leading us.

### Building Maintenance Issues

A decent spell of weather allowed us to finally paint the roof of the third container. With the Chairman's assistance, a great deal of thanks goes to Gary Lawrence (the Dentist) who treated the rust spots, sanded and applied two coats of paint. Eagle eyed Gary spotted a dent in the roof of one container in which rain pools and has offered to return to assist us deal with the flaw before it causes any issues.

Weather has caused a problem with a hinge on one of the exterior doors which will need to be fixed. We have a builder looking at it and hopefully the problem will be eliminated.in the next few days.

### THANK YOU SO MUCH!

Along with our major donors, Kapiti Pak'nSave and Foodstuffs to whom we are constantly grateful, we have received donations of food, goods and cash from people arriving at the foodbank and give a special thanks to those outstanding.

**Community Captains Paraparaumu College**

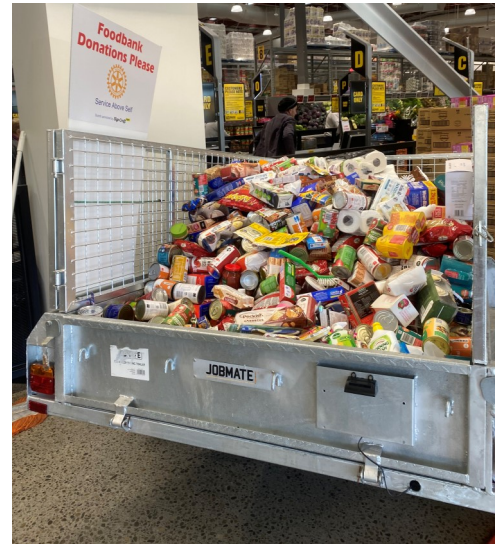
**Kapiti Uniting Church**

**Beard Brothers**

**Connect Church**

**Paraparaumu College Health & Nutrition Students**

(Continued from page 1) heart warming demonstrating how a community works together for the good of those in need. We were most fortunate that Pak'n Save allowed Kapiti Rotary to station a trailer inside their store for a whole week either side of the collection day to allow shoppers to buy food and put it in the trailer as a donation. As you can see from the photo it was a wonderful response.



### A Good turn brings rewards -Trolley full of food

A group of Rotarians from the Kapiti Rotary club were carrying out a Community service Working Bee at the Otaihangā domain on the Saturday prior to the Foodbank Collection when, they spotted a gentleman in an electric car who had become stuck in the mud and unable to gain traction. The group assisted the driver who happily thanked them and went on his way. The



following weekend during the Kapiti Rotary Foodbank collection, the same gentleman arrived at Pak'n Save to shop. On leaving the store, he presented the Rotarians outside collecting a large full trolley of groceries to thank them for their support at Otaihangā the previous week.



Our Volunteer Drivers Tom, Guy & Gordon rise to the occasion on the day as always -Thanks Guys!

**PAK'nSAVE**

OUR POLICY: NZ'S LOWEST FOOD PRICES

**Kapiti Pak'n Save - Consistent Ongoing Financial Supporters of The Kapiti Community Foodbank Inc**